

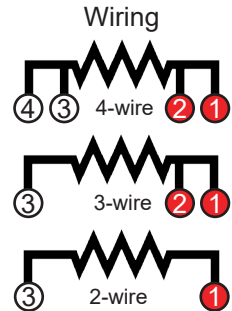
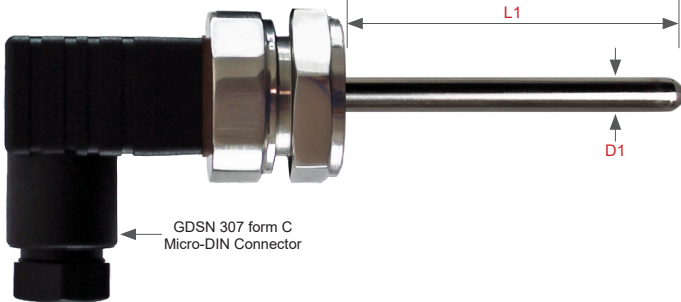
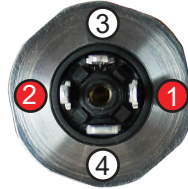
**PD-0 RTD (Pt100/Pt1000) Sensor with Micro-DIN Connector - Unthreaded**

PD-0 sensors are supplied with a GDSN 307 form C Micro-DIN Connector which is IP65 rated. The sensors can be manufactured as Pt100 or Pt1000 with a 2, 3 or 4-wire configuration. Various grades/accuracies of element can be used.

The stem diameter can be from 3.0mm up to 8.0mm, the probe length can be up to 1000mm long, manufactured to suit your application. Standard stock lengths are available.

All 316L stainless steel wetted parts, supplied without a thread to allow the use of adjustable fittings.

- Pt100 or Pt1000 as standard (simplex only)
- 3.0, 4.0, 4.5, 6.0, 8.0mm Ø 316L stainless steel probe
- 2, 3 or 4-wire configuration
- Temperature rating: Max +260°C, Min -50°C (connector +150°C)
- Supplied without a thread to allow the use of adjustable fittings
- Standard stock lengths 50mm, 100mm, 150mm
- IP65 rated (plug, socket and gasket supplied)



1	sensor type			code			
	RTD (Pt100) Sensor with Micro-DIN Connector (unthreaded)			PD-0			
	RTD (Pt1000) Sensor with Micro-DIN Connector (unthreaded)			PDK-0			
2	wiring configuration	code	3	grade of element	accuracy at 0°C	accuracy at 100°C	code
	2-wire	2		B	± 0.30°C	± 0.80°C	B
	3-wire	3		A	± 0.15°C	± 0.35°C	A
	4-wire	4					
4	probe diameter (D1)	code	5	probe length (mm) (L1)		code	
	3.0mm	3.0		As required to suit your application		e.g. 250	
	4.0mm	4.0					
	4.5mm	4.5					
	6.0mm	6.0					
	8.0mm	8.0					

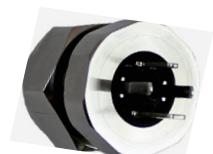
order code (example) 1 2 3 4 5  
PD-0 - 3 - A - 6.0 - 150



Outer socket with case removed



Socket



Plug